



NEON GREEN QUARTZ - Pinwheel Cut

96 index gear • 10 mm • 4.3 carats

PAVILION

P1	43.00°	96-16-32-48-64-80
P2	68.00°	7-23-39-55-71-87
P3(G)	90.00°	7-23-39-55-71-87

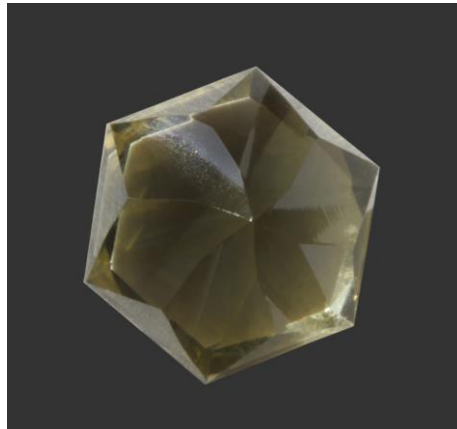
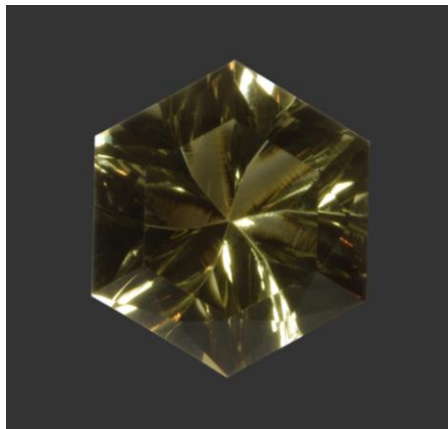
PAVILION - CONCAVE

Using 8 mm mandrel and 1,200 Diamond Paste polish, set protractor at 0°. Quill should be facing motor. Set at 41° using P1 tooth numbers.

After motor and quill are aligned and the dial indicator (D.I.) is set at 0° (table D.I.) move table .44 mm towards you. This will be cutting off center but after all the facets are cut, the pavilion will look centered. Polish with Cerium Oxide. Cut until 1 mm before girdle. This should leave a small section on the lower left side of the groove untouched.

CROWN

C1	45.00°	96-16-32-48-64-80	Cut to finish girdle
C2	34.00°	2-14-18-30-34-46-50-62-66-78-82-94	Cut to C1 and girdle
C3	28.00°	96-16-32-48-64-80	Cut to P1 and P2
TABLE	00.00°		



Authorized factory representative for Ultra Tec Faceting Machines, Equipment & Accessories