

## SMOKY QUARTZ - Eli's Voyage Cut

96 index gear • 11 mm x 14 mm • 11.4 carats

### PAVILION

P1	41.00°	96-48	Cut to a center point
P2(G)	90.00°	96-48-18-66	
P3	72.00°	18-66	Cut to meet girdle line

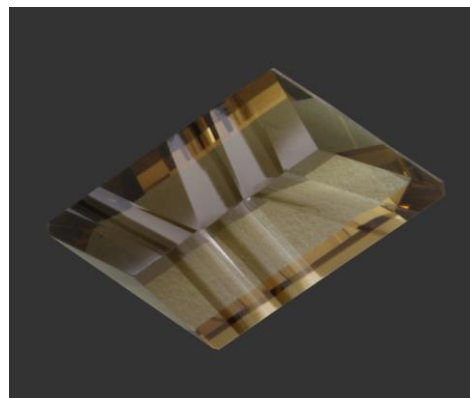
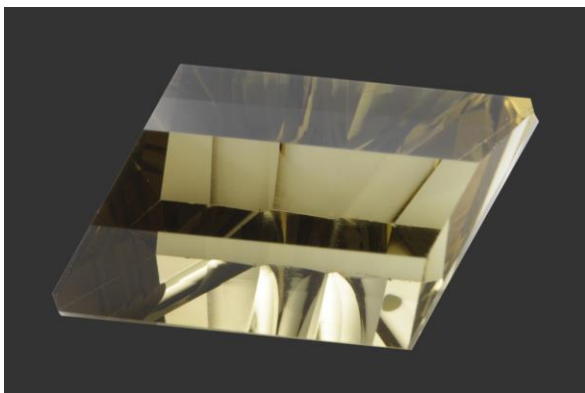
Polish girdle, P1, P2 and P3

### PAVILION - CONCAVE

Set index gear at 96. Center stone over an 8 mm copper mandrel. Set mast at 41.00°. Set dial indicator (D.I.) at 0° (with 50% travel each way). With 1,200 polish, cut a concave facet approximately 2.80 mm wide. Rotate the index gear to 48 and repeat. Move the D.I. backwards 3 mm (the small needle should be on 7). Cut matching concave facets on 48 and 96. Polish with Cerium. Turn motor plate to 30° (with the mandrel pointing at you). Center this concave over concave on opposite side.

### CROWN

C1	42.00°	96-48
C2	78.00°	78-30
C3	40.50°	96-48
C4	90.00°	66-18 Corners
TABLE	00.00°	



Authorized factory representative for Ultra Tec Faceting Machines, Equipment & Accessories